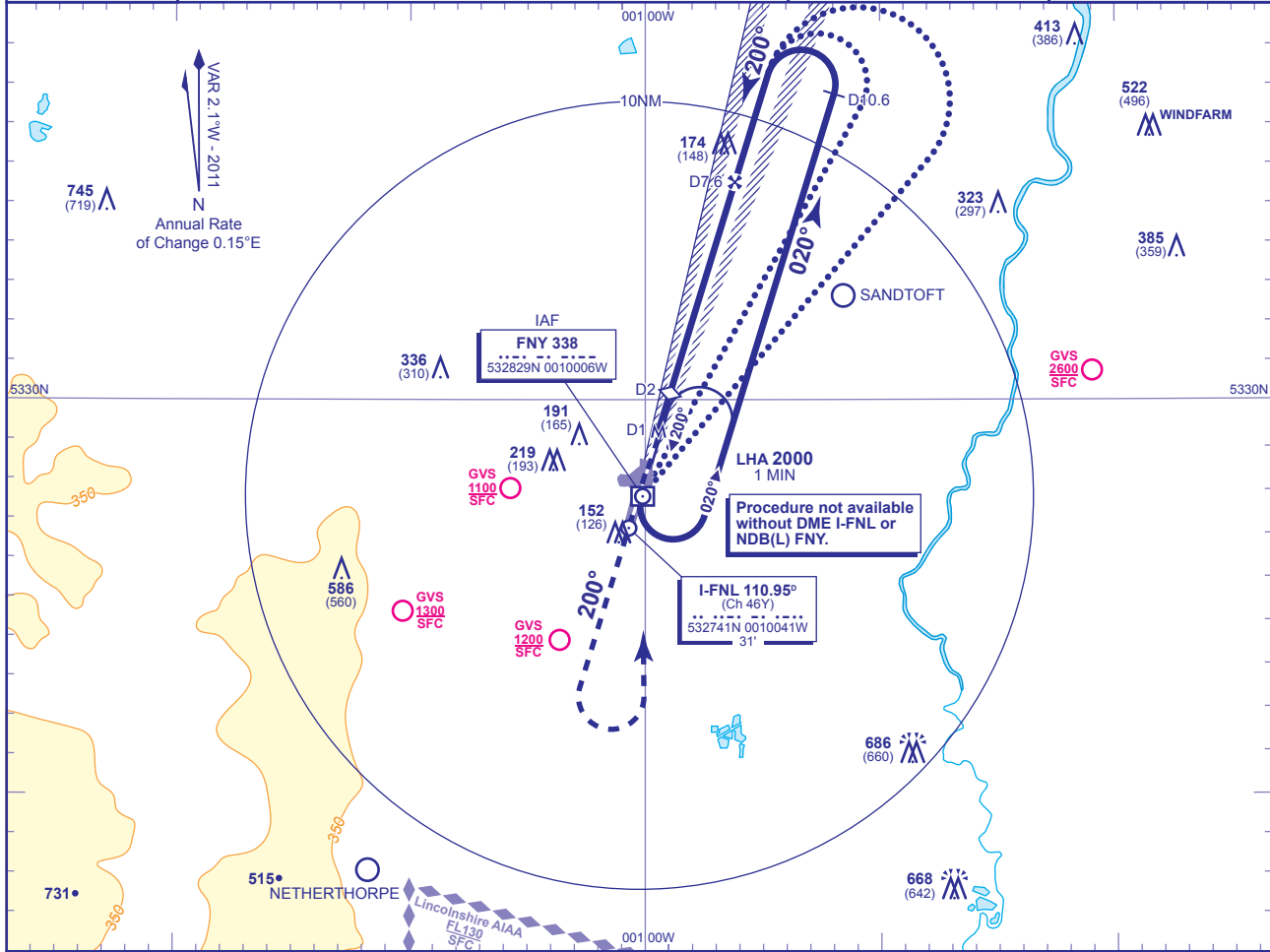


INSTRUMENT APPROACH CHART - ICAO

DONCASTER SHEFFIELD

LOC/DME
RWY 20
(ACFT CAT A,B,C,D)

<p>MSA 25NM NDB(L) FNY</p>	APP 126.225	DONCASTER APPROACH	AD ELEVATION 55
	TWR 128.775	DONCASTER TOWER	THR ELEVATION 26
	RAD 126.225, 129.050	DONCASTER RADAR	OBSTACLE ELEVATION 745 AMSL (719) (ABOVE THR)
	ATIS 134.950	DONCASTER INFORMATION	BEARINGS ARE MAGNETIC
			TRANSITION ALTITUDE 5000

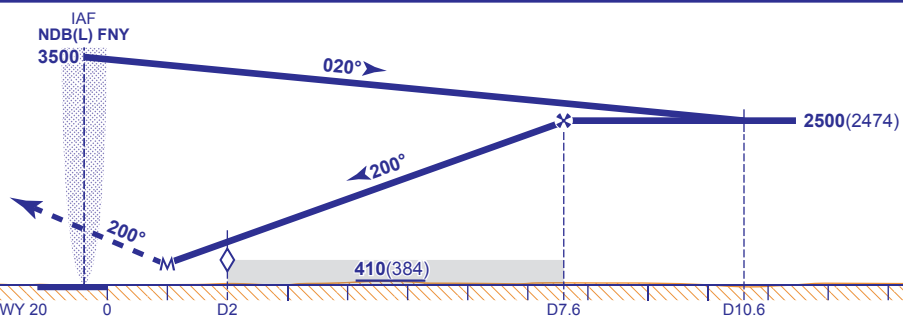


RECOMMENDED PROFILE Gradient 5.24%, 319FT/NM

DME I-FNL	7	6	5	4	3	2 (SDF)	1
ALT(HGT)	2310(2284)	1990(1964)	1670(1644)	1350(1324)	1030(1004)	720(694)	400(374)

Arrival not below 3500.

MAPt I-FNL DME 1
Continuous climb to 2500. Initially, straight ahead to 2500, then turn left to NDB(L) FNY at 2500 or as directed.



Aircraft Category	A	B	C	D	Rate of descent	G/S KT	160	140	120	100	80
OCA (OCH) Procedure	330(304)	330(304)	330(304)	330(304)		FT/MIN	850	740	640	530	430
VM(C)OCA (OCH AAL) Total Area	480(425)	520(465)	760(705)	760(705)							

ALTERNATIVE PROCEDURE

From overhead NDB(L) FNY (IAF) **not below 3500**(3474) fly outbound on NDB(L) QDR 032° (CAT A,B) or NDB(L) QDR 043° (CAT C,D) descending to 2500(2474). At I-FNL D10.6 turn left to establish on the localiser then continue as for main procedure.

- NOTE 1** Aircraft will normally be required to hold not lower than 3500. Lowest altitude to commence procedure from hold is 2500.
NOTE 2 CAUTION: Pilots of inbound traffic to note proximity of Sandtoft aerodrome to instrument approach procedures.

CHANGE: MAG VAR. PAGE NUMBER.

AERO INFO DATE 13 JAN 11